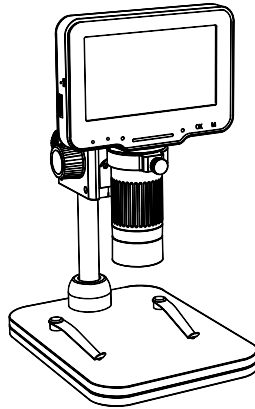


Technaxx® * User Manual

Digital Microscope Pro TX-277



Before using the appliance for the first time, please read the instructions for use and safety information carefully.

This appliance is not intended for use by persons (including children) with reduced physical, sensory or mental capacities, or by persons lacking in experience or knowledge, unless they are supervised or instructed on the use of this device by a person responsible for their safety. Children should be supervised to ensure they do not play with this device.

Keep this user manual for future reference or product sharing carefully. Do the same with the original accessories for this product. In case of warranty, please contact the dealer or the store where you bought this product.

Enjoy your product * Share your experience and opinion on one of the well-known internet portals.

Specifications are subject to change without notice - please be sure to use the latest manual available on the manufacturer's website.

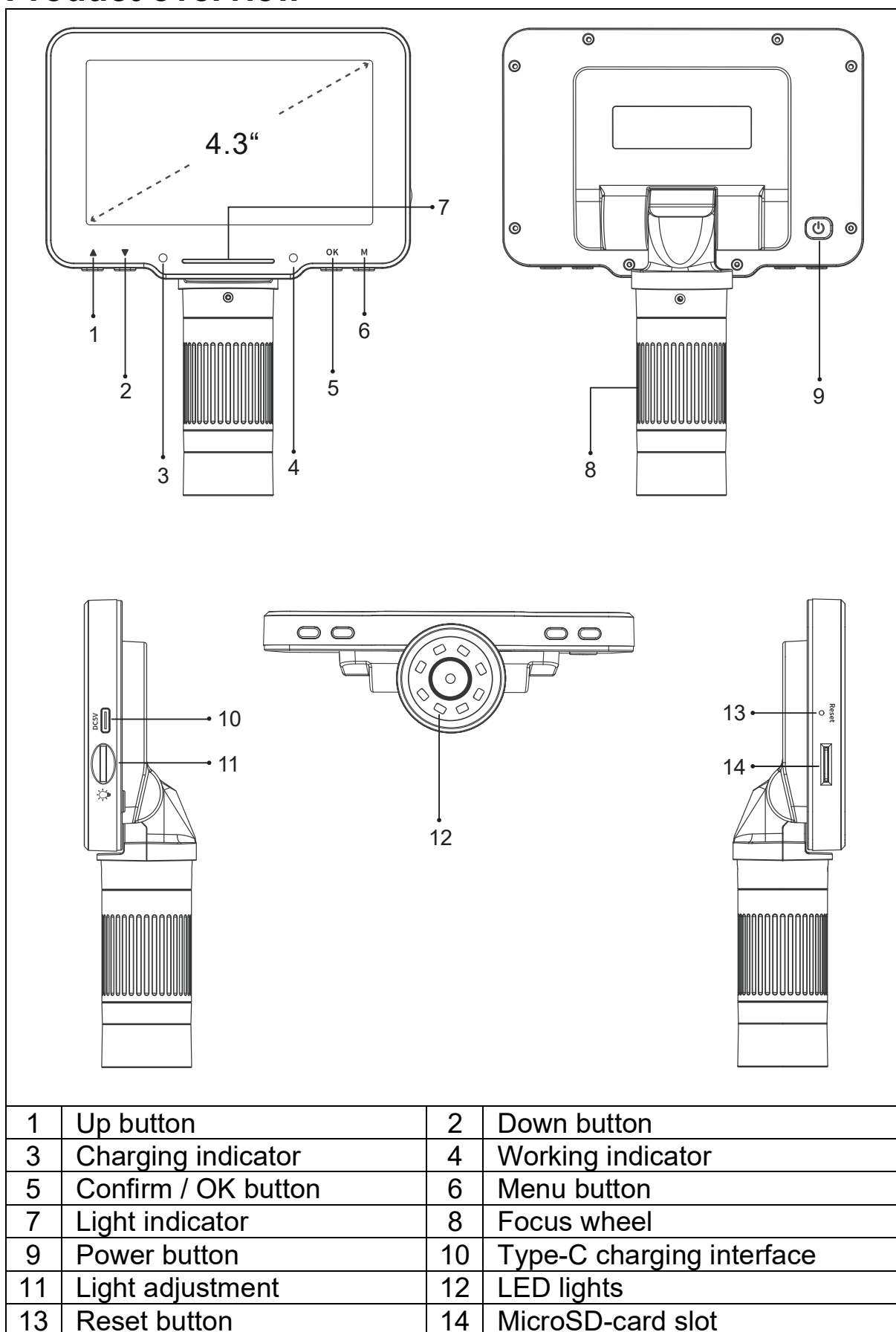
Features

- 50x magnification
- 4.3 Inch IPS Display
- Display angle adjustment
- Adjustable holder
- 8 Illumination LED
- Photo and video function
- MicroSD card support
- PC connection

Technical specifications

Screen	4.3-inch IPS Screen
Screen resolution	480 x 272 px
CMOS-Sensor size	1/4"
Focus mode	Manual
Focus range	10mm – 40mm
Magnification	50x
Aperture	F4.5
Camera angle	16°
Photo resolution	10M, 7M, 5M, 3M, 2M, 1M
Photo format	JPG
Video resolution	720P
Video format	AVI
PC resolution and transmission rate	1280 x 720px / 25fps
MicroSD supported storage	Up to 32GB (not included)
Light	8 LED lights (adjustable)
Power	1.9 W
Working current	380 mA
Battery	Built-in 1800mAh / 3,7 V
Charging time	Approx. 3h
Working time	Approx. 5h
PC operating systems	Windows 10 or higher; Mac OS x 12 or higher
Charging and signal interface	USB-C
Operating temperature	10°C to 45°C
Material	ABS plastic
Weight / dimension	405 g / 200 x 120 x 160 mm
Package content	Digital Microscope Pro TX-277, support pole, holder, base, charging cable, user manual

Product overview

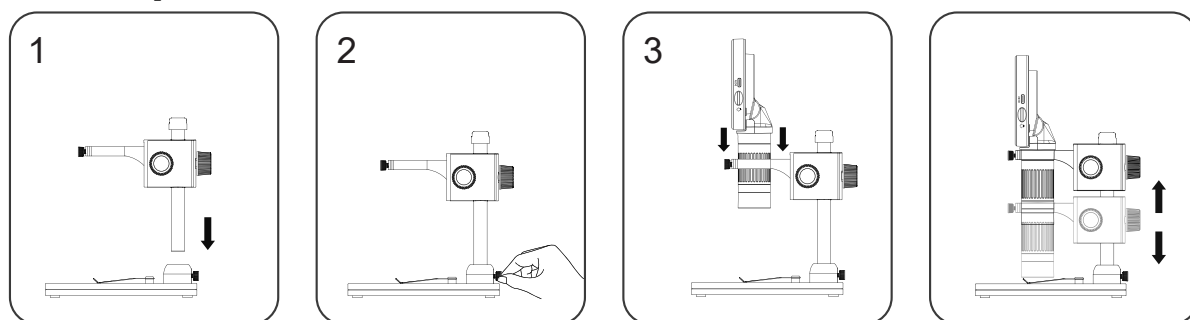


Charging

Please charge the TX-277 fully with the included USB-C charging cable before first use. Plug the charging cable into the USB-C port (10) of the microscope unit, and the other end into a USB jack of a power-charger* (5V/2A recommend, *not included).

The LED indicator will light up in red. It turns green when it is fully charged after approximate 3 hours.

Built-up



1. Connect the support pole with the holder. Holder will be connected with the main device later. **2.** Connect the support pole with the base. Secure it with tighten the back side screw gently. **3.** Now the main device can be connected to the holder and the device can be used.

Button settings

- **Up/Down button:** When entering the Menu interface, it is the selection key; When entering the Photo and Video mode, it is the zoom in/out key.
- **Charging indicator light:** The indicator light is red long after charging, green long after full.
- **Indicator strip:** Used to indicate the switch status of the LED light.
Working indicator light: After powering on, the indicator is long bright blue. After powering off, the indicator is off.
- **Confirm/OK button:** When Photo mode, short press to take pictures and store automatically; When Video mode, short press to start/end recording; When viewing video files in Playback mode, short press to play video; When entering the Menu interface, short press to confirm the selection.
- **Menu button:** Long press this key to enter the Menu interface, and then short press to exit the Menu or return to the previous level; Short press this key to switch between three modes of Photo/ Video/ Playback.
- **Power button:** Long press for 3 seconds to turn the microscope on/off.
- **Focus wheel:** Rotate this wheel to focus on the observation object, slowly adjust until the picture is clear.
- **Type-C interface:** This interface supports charging and data transfer.
- **Light wheel:** Turn the wheel to adjust the LED light brightness.


- **LED lights:** When the observation environment is not enough light, it can make up light.
- **Reset button:** When the microscope is abnormal, poke this hole with a fine pointed object to force the power off. All settings will be changed to default.
- **MicroSD card slot:** Support maximum 32GB memory card (Note: please use C10 high-speed card)

Modes


Press “M” button (6) to switches between the three modes.

Note: Before using the microscope, please insert the MicroSD card into the microscope (14) to ensure storage of Photo / Video file.


Photo

When the icon in the upper left corner of the microscope is"  ", it is in photo mode; When the microscope is on, short press the menu button on the microscope, it can switch to photo mode.

Video

When the icon on the upper left corner of the microscope is"  ", it is in video mode; When the microscope is on, short press the menu button on the microscope, it can switch to video mode.

Playback

When the icon in the upper left corner of the microscope is"  ", it is in playback mode; In the power on state, short press the menu button on the microscope, it can switch to playback mode. View the pictures selected by pressing the OK key to view; View the video by pressing the OK key for play / pause; View the current picture / video file. Press the up/down selection key to turn the page, or short press the playback key again, you can return to the previous level to re-select the file you need to view.

Settings

Press and hold “M” button (6) to activate menu.

Note: Settings are related to set mode. (Photo / Video / Playback settings are different)

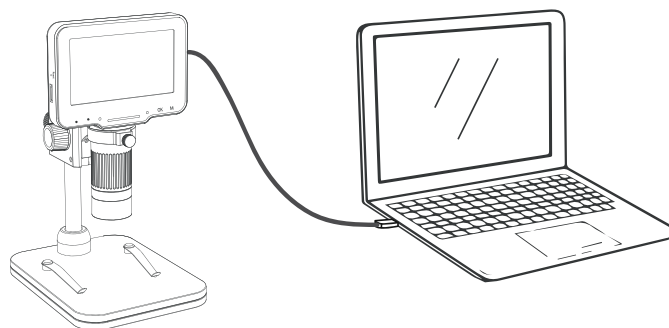
Following settings are available:

- **Photo Resolution:** 10M, 7M, 5M, 3M, 2M, 1M.
- **Date Tag:** Select On, the date and time mark will be displayed in the lower right corner of the photo / video file; Select Off, the photo / video file will not display the date and time mark.
- **Video Resolution:** 720P.
- **Record Audio:** If you select "On", the video is recorded with sound. Select “Off” to mute the video recording.
- **Screen Protection:** Select a suitable time to make the device turn off the screen automatically when no one is operating it.

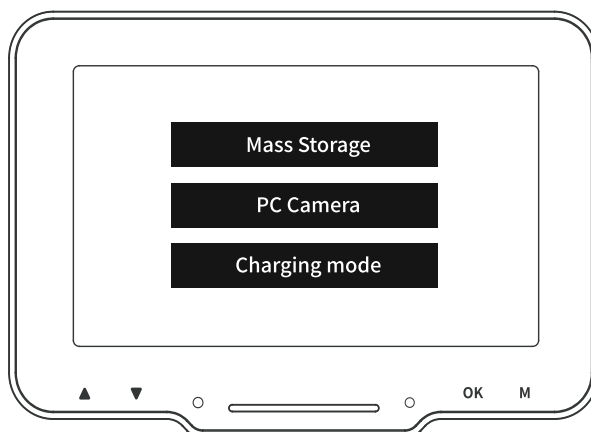
- **Automatic Shut-down:** After selecting auto shutdown time, the microscope will shut down automatically when no one is operating; no auto shutdown, please select "Off".
- **Light Source Frequency:** Set the mains frequency.
- **Language Settings:** Set language. (English, Simplified Chinese, Traditional Chinese, Russian, Japanese, Korean, French, Spanish, Portuguese, German, Italian)
- **Date / Time:** You can set the date / time parameter of microscope display.
- **Line Assist:** Select on, in the photo/video mode, the microscope screen will have "+" auxiliary line display; no "+" auxiliary line, select "Off" can be.
- **Formatting:** This operation will delete all data from the MicroSD card. (Note: It will not be recovered after deletion, please operate carefully)
- **Default setting:** Restore factory settings.
- **Version:** Check the current firmware version.
- **Delete / Protect:** When viewing a single picture or video in Playback mode, short press the Menu key, you can choose to delete or protect the files

PC-Connection

1. Connect the microscope to the computer via a USB Type-C cable. (included)



2. Power on the microscope. Three different modes are available:



Mass Storage: Enter the microscope memory from the computer side, you can view and process the current picture and video files in the MicroSD card, at this time the microscope only Power button and touched slider available.

PC Camera: After selecting this mode, you can get a larger magnification of the image through the computer camera software, at this time the microscope power button and light slider available only.

Charging Mode: When the microscope is low on power, you can use the microscope while charging, use USB Type-C data cable to connect the microscope and the computer side, the microscope is turned on, select charging mode, you can enter the charging state.

(Note: You can also use daily cell phone charger, computer or power bank to charge the microscope)

Software

You can use the microscope with computer by use default camera software of Microsoft or Mac OS, as it connects as default camera to your computer. Or download the “HiView” Software at: <http://soft.hvscam.com> The Software can be downloaded as App for Microsoft and Mac OS in the regular stores as well.

Note: Suitable for all Windows 8 or above; Mac OS x 12 or above.

Support

Service phone No. for technical support: **01805 012643*** (14 cent/minute from German fixed-line and 42 cent/minute from mobile networks). Free Email: **support@technaxx.de**

The support hotline is available Mon-Fri from 9am to 1pm & 2pm to 5pm

Care

Clean the device only with a dry or slightly damp, lint-free cloth.

Do not use abrasive cleaners to clean the device.

Notes

- Default charging cable will also work as data cable for computer connections.
- The magnification is limited due to it is a digital microscope. To see higher magnification please use the microscope with PC monitors.
- The microscope cannot be connected to any mobile phones.

Warnings

- Do not disassemble the TX-277, it may result in short-circuit or damage.
- Battery warning: Improper use of the battery may cause fire or chemical burns. The battery may explode in case of damage.
- Do not modify, repair or remove without professional guidance.
- Do not use corrosive or volatile liquid for cleaning.
- Do not drop or shake the TX-277, it may break internal

circuit boards or mechanics. •Keep the TX-277 in dry and ventilated environment. Avoid high humidity and high temperature. Also, batteries should not be exposed to excessive heat or direct sunlight. •Do not expose to water or rain. •Keep the TX-277 away from little children.

Declaration of Conformity



The EU Declaration of Conformity can be requested at the following address: www.technaxx.de/ (in the lower bar "Declaration of Conformity").

Disposal



Disposal of the packaging. Sort packaging materials by type upon disposal.

Dispose of cardboard and paperboard in the waste paper. Foils should be submitted for recyclables collection.



Disposing of old equipment (Applies in the European Union and other European countries with separate collection (collection of recyclable materials) Old equipment must not be disposed of with household waste! Every consumer is required by law to dispose of old devices that can no longer be used separately from household waste, e.g. at a collection point in his or her municipality or district. This ensures that the old

devices are properly recycled and that negative effects on the environment are avoided. For this reason, electrical devices are marked with the symbol shown here.



Batteries and rechargeable batteries must not be disposed of in household waste! As a consumer, you are required by law to dispose of all batteries and rechargeable batteries, whether they contain harmful substances* or not, at a collection point in your community/city or with a retailer, to ensure that the

batteries can be disposed of in an environmentally friendly manner. * marked with: Cd = cadmium, Hg = mercury, Pb = lead. Return your product to your collection point with the fully discharged battery installed inside!

Made in China

Distributed by:

Technaxx Deutschland GmbH & Co. KG
Konrad-Zuse-Ring 16-18,
61137 Schöneck, Germany