

Technaxx® * User Manual
Wireless Car Charger with
Smartphone holder TE17

Wireless charging max. 10W, wired charging max. 2.4A

The Declaration of Conformity for this device is under the Internet link:
www.technaxx.de/ (in bottom bar "Konformitätserklärung"). Before using the device the first time, please read the user manual carefully.

Service phone No. for technical support: 01805 012643 (14 cent/minute from German fixed-line and 42 cent/minute from mobile networks).

Free Email: **support@technaxx.de**

Keep this user manual for future reference or product sharing carefully. Do the same with the original accessories for this product. In case of warranty, please contact the dealer or the store where you bought this product.

Warranty 2 years

Features

- Advanced 10W induction charging technology with optimized charging speed, compared to conventional 10W induction chargers
- Supports iPhone X/8/8 Plus, Samsung Galaxy S9/S8/S8 Plus/Note 8/S7/S7 Edge/ Note 7/S6/S6 Edge/Note 5 (07-2018)
- Patented clamp construction for variously Smartphone fitment
- Eliminate safety concerns with over-voltage protection & temperature control
- One-hand operation to attach or extract your phone

Introduction

This device provides you a wireless charging solution for any Smartphone that support wireless charging. With advanced wireless charging technology, this device delivers up to 10W standard charging capability. The chucking type structure with maximum 8.8cm width enables a one-hand operation to attach or extract your phone.

Note: Attachment or extraction should only be done before or after driving the car. Do not attach or extract the phone while driving!

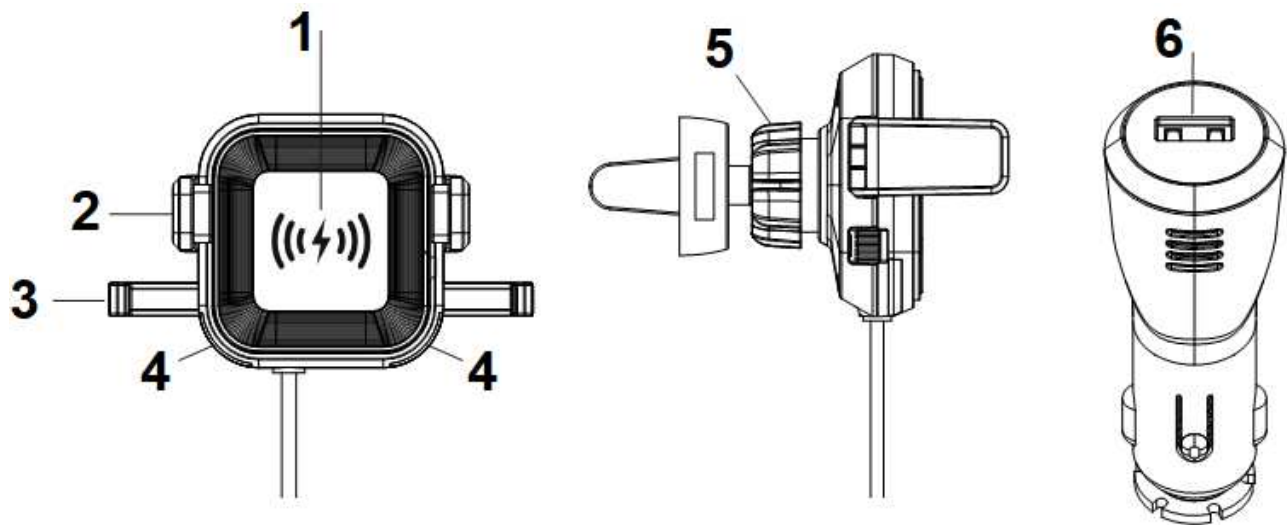
Technical specification

Indicator	2 LED lights for charging indication
Input power adapter	DC 12–24V (cigarette lighter socket)
Output power adapter	DC 5V (USB)
Output power	Max. 10W (induction charging) 2.4A (USB port)
Smartphone	(W) 8.8cm maximum
Power adaptor cable	Length 70cm
Material	ABS
Weight	130g (incl. cable)
Dimensions	(L) 10.5 x (W) 6.1 x (H) 9.9cm Charger with vent holder
Package contents	Wireless Car Charger with Smartphone holder TE17, Cigarette power adapter with 2.4A USB power adapter, Suction cup holder, Air vent holder, Washer, Spare fuse, User Manual

Compatible Smartphone (July 2018)

This 10W induction charger is only compatible with Samsung Galaxy S9/S8/S8 Plus/Note 8/S7/S7 Edge/ Note 7/S6/S6 Edge/Note 5 and other 10W induction charge enabled devices. iPhone X/8/8 Plus are Qi-5W induction charging and charging at its normal standard charging rate. 10W induction charging is 10% faster than 5W induction charging.

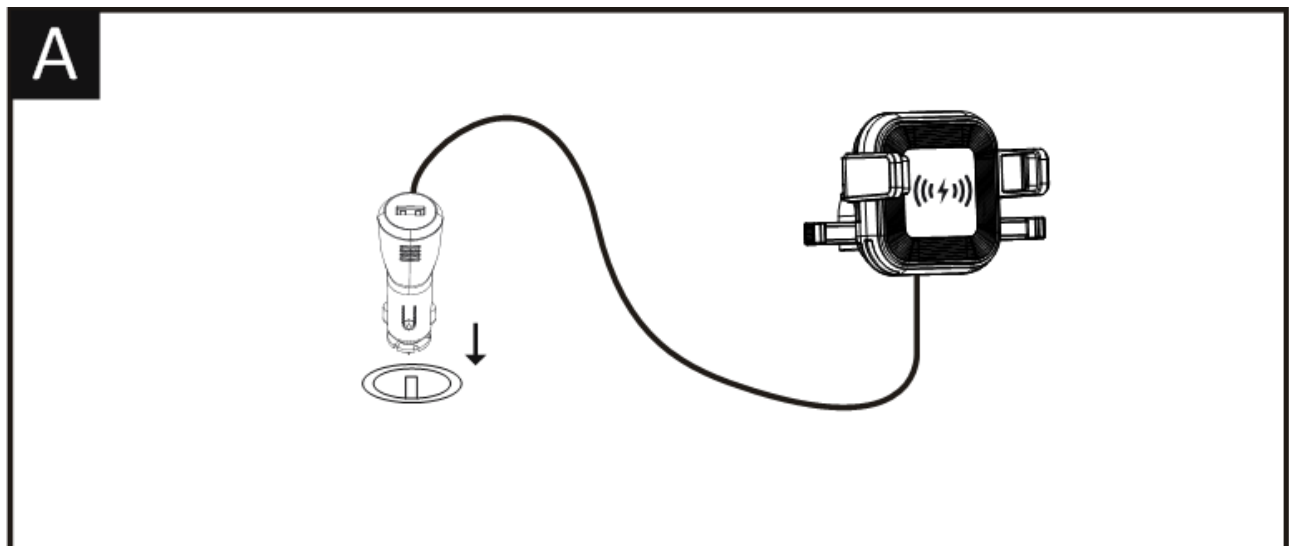
Product overview



1	Induction charging area	4	LED Indicator
2	First Arm	5	Ball joint angle adjustment
3	Second Arm	6	USB Output: DC 5V/2.4A (power adapter)

Installation Instruction

A: Plug the socket adapter into the car cigarette lighter

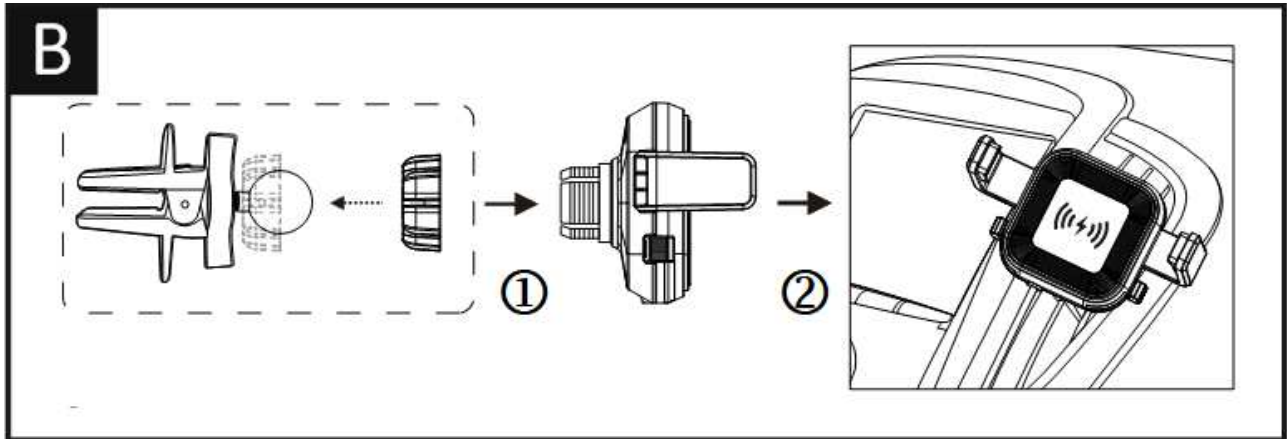


B1: Make sure the ball joint is embedded into the washer before locking the bracket to the back shell of the unit.

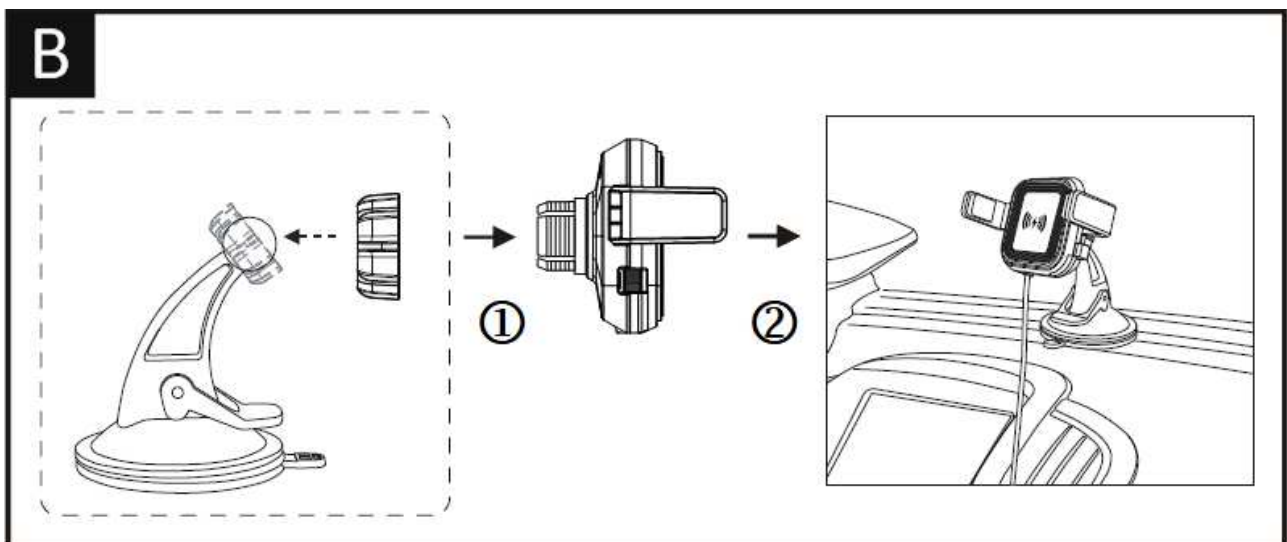
B2: Attach the device to the air vent or the dashboard.

Note: Unscrew the washer before changing between option 1 and option 2.

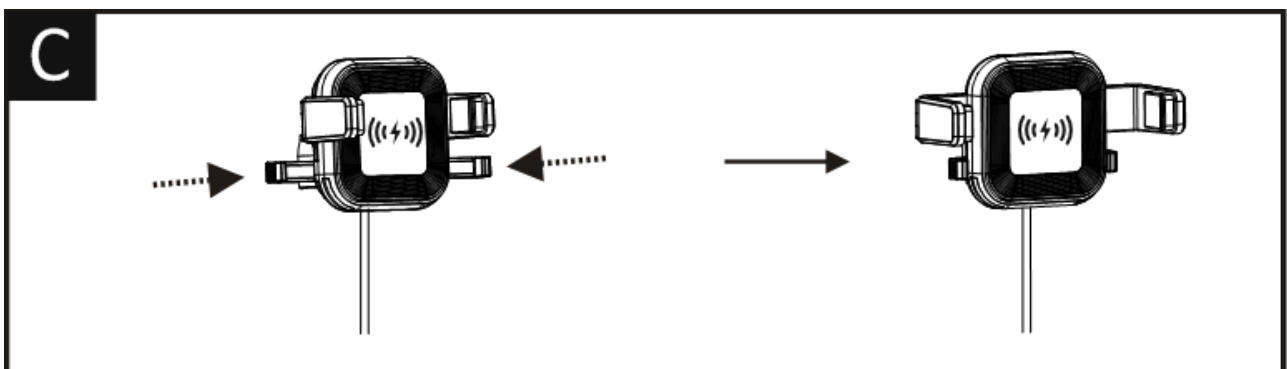
Option 1: Air Vent Holder



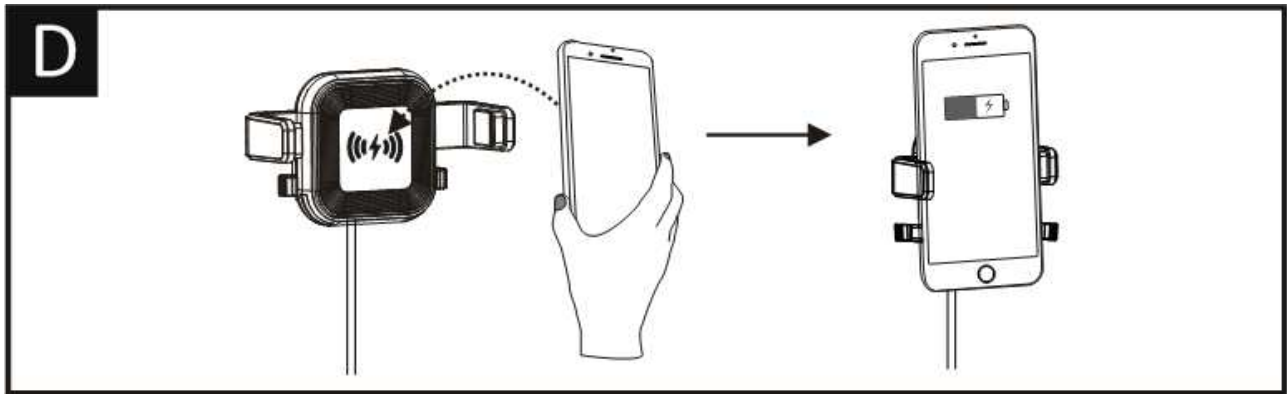
Option 2: Dashboard holder



C: Push the second arms (3) towards



D: Place your Smartphone into the bracket with a slight push



Operating Instruction

→ Wireless Charging

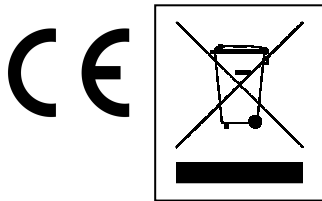
- The two indicator LEDs will flash in RED ~3 seconds once the device is powered on.
- Before placing your Smartphone into the bracket, make the first arms (2) are separated and the second arms (3) are closed.
- If a Smartphone is being placed which does not support wireless charging, the two indicator LEDs are flashing in BLUE.
- Charging starts as soon as an effective induction field has been generated. The two indicator LEDs will blink slowly in RED and the current charging status appears on your Smartphone.
- If no connection can be established through induction, you may have to change the position of your Smartphone.
- Charging stops automatically once the battery of your device is fully charged. The two indicator LEDs will stay in BLUE.

→ Car charger function

- The TE17 comes with an extra USB port on the power adaptor for charging. The output is DC 5V/2.4A. Connect the TE17 to your Smartphone for wired charging (use your Smartphone's USB cable).

Warnings:

- Improper use of this product may result in damage to this or attached products.
- Never use this product in following conditions: Moist, underwater, near heater or high-temperature service, in direct strong sunshine, conditions with apt falling
- Never dismantle the product.
- For charging a Smartphone with the inductive charger make sure that your Smartphone is compatible with the induction charging technology. Read the operating instructions of your Smartphone first!
- Note that mobile phone sleeves, covers, etc. and other materials between the inductive charger and the backside of your Smartphone may disturb or prevent actually the charging process.



Hints for Environment Protection: Packages materials are raw materials and can be recycled. Do not disposal old devices or batteries into the domestic waste. **Cleaning:** Protect the device from contamination and pollution (use a clean drapery). Avoid using rough, coarse-grained materials or solvents or aggressive cleaner. Wipe the cleaned device accurately. **Distributor:** Technaxx Deutschland GmbH & Co.KG, Kruppstr. 105, 60388 Frankfurt a.M., Germany