

# Technaxx® \* User Manual

## Technaxx KFZ Cup Charger TX-155

### 12-24V suitable, wireless charging

Declaration of Conformity: [www.technaxx.de/](http://www.technaxx.de/) (in bottom bar "Konformitätserklärung"). Before using the device the first time, please read the user manual carefully.

Service phone No. for technical support: **01805 012643** (14 cent/minute from German fixed-line and 42 cent/minute from mobile networks).

Free Email: **support@technaxx.de**

Keep this user manual for future reference or product sharing carefully. Do the same with the original accessories for this product. In case of warranty, please contact the dealer or the store where you bought this product.

**Warranty 2 years**

### Features

- fast wireless charging slot max. 10W (depends on your mobile phone)
- 2 x USB, 5V, 2A each
- Lighting port connector for Apple® AirPods® 1<sup>st</sup> and 2<sup>nd</sup> generation
- Cup Design fit in Car Cup-holder

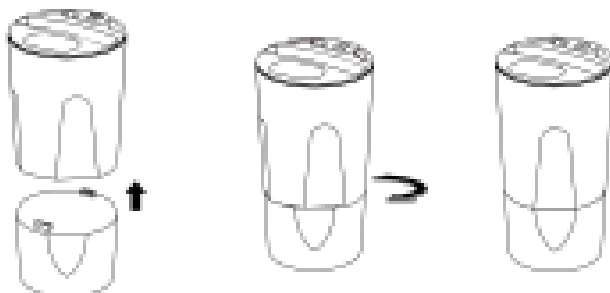
### Installation and use

Put the vehicle wireless charger into the hole of the car cup. Connect the power supply, the charger is electrified.

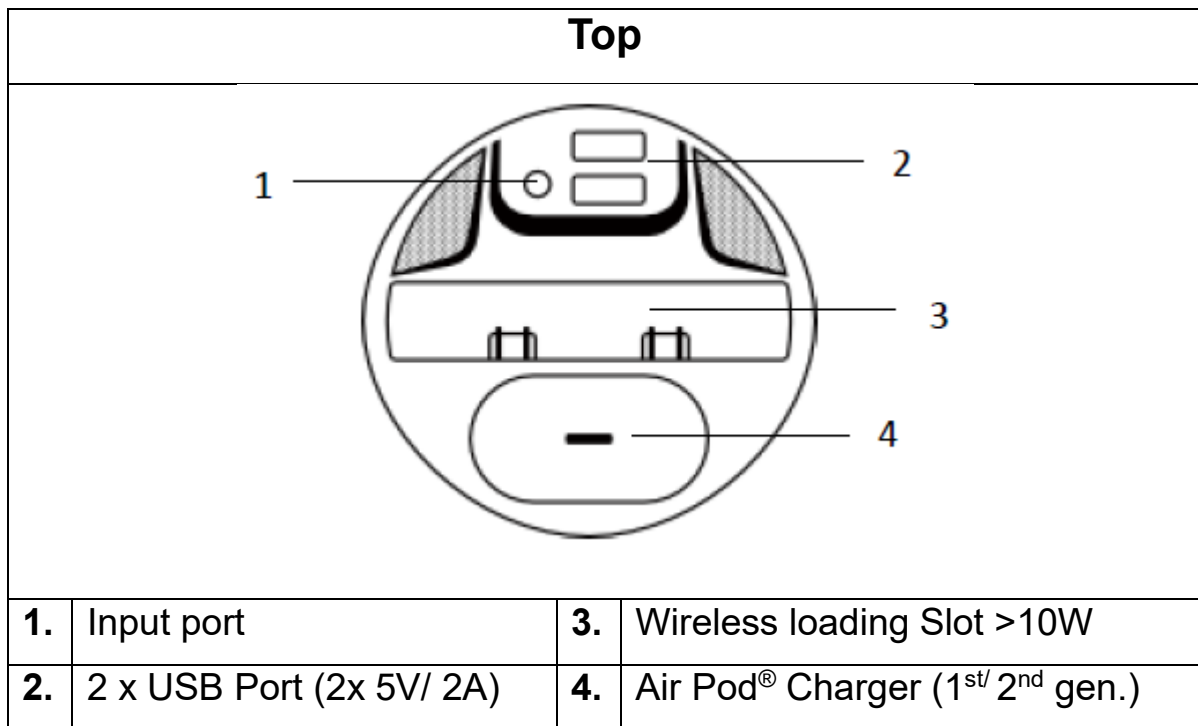
\*If your car water cup is small, please put the base in the charger.

Installation base:

The base button is inserted into the bottom hole of the wireless car charger. The rotation is tightened.



### Product overview



## How to use

Plug the Cup Charger into the car cigarette lighter socket (DC 12/24V) the red LED indicate the item is ready. To load your mobile phone put it in the wireless charger slot, Display should show in direction of the Air Pod® Charger, a blue LED show your mobile phone gets charged. To charge your Air Pod® or compatible item plug it in the charging dock.

**Note:** When leaving the car, remove the Cup Charger from the DC 12/24V socket. Whether a device works with the ignition key pulled also depends on the car. Some manufacturers interrupt the power supply of the cigarette lighter in this case.

## Technical specifications

Input voltage	DC 12-24V (cigarette lighter socket)
Power consumption	12/24V max. 5A
Output	Max 35W
Charging ports USB1 / USB2	5V/ 2A / 5V/ 2A
Charging Slot	Up to 81mm wide 10W
Air Pod® Base	Max. 2,35W
Working temperature	-10°C ~ 45°C
Storage temperature	-20°C ~ 70°C

Material	ABS
Weight / Dimensions	240g / (L) 16,5 x (Ø) 7-9cm
Package contents	TX-155, User Manual, connection cable to 12/24V

## Warnings

● Use the item with correct 12/24V adapter only ● implantable medical equipment (Pacemakers, cochlear implants, etc.) Keep at least 30CM away from the Charger ● Do not place magnetic or magnetic cards (ID card, bank card, etc.) too close to avoid magnetic card failure ● Do not squeeze, collide or pull the power cord hard to avoid damage to electronic parts ● Do not store metal objects in/on the cup charger ● To prolong its life, pull it out before starting the engine of the car. ● Do not remove any cover to avoid the risk of an electric shock or other damages. ● Do not attempt to disassemble, it may result in short-circuit or even damage. ● Do not drop or shake, it may break internal circuit boards or mechanics. ● Do not expose to rain or moisture, dripping or splashing, to reduce the risk of fire or electrical shock. ● Keep the device in dry and ventilated environment, avoid high humidity/temperature. ● Do not install the device near any heat source (e.g. radiators, oven) and keep it away from direct sunlight. ● Keep the device away from little children.



**Hints for Environment Protection:** Packages materials are raw materials and can be recycled. Do not disposal old devices or batteries into the domestic waste. **Cleaning:** Protect the device from contamination and pollution (use a clean drapery). Avoid using rough, coarse-grained materials or solvents/aggressive cleaner. Wipe the cleaned device accurately. **Distributor:** Technaxx Deutschland GmbH & Co.KG, Kruppstr. 105, 60388 Frankfurt a.M., Germany

*Enjoy your product \* Share your experience on one of the well known internet portals.*