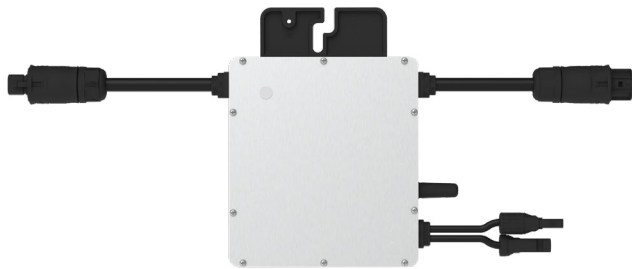
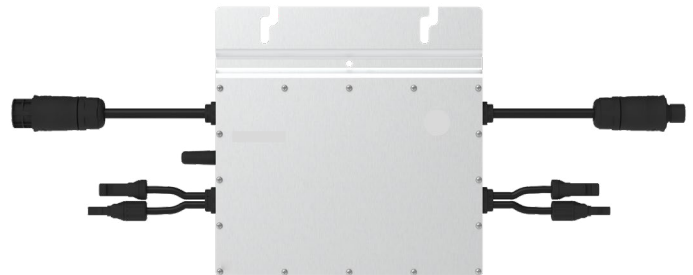


# PV Micro Inverter 300W/600W TX-203/TX-204

**PV Micro Inverter 300W TX-203**



**PV Micro Inverter 600W TX-204**



**Features:**

- Easy installation, just plug and play
- Lightweight and compact micro inverter
- Direct mounting on the racking system or panel frame
- Ideal for balcony power plants and mini solar systems
- On-grid system, for feeding power into the 230V household grid via socket plug
- MC4 connector for solar panel connection
- Max. solar panel power 240-380W
- Integrated MPPT charge controller for solar panels: particularly efficient power yield
- MPPT voltage range: DC29-48V
- VDE-certified: meets highest safety standards
- Waterproof IP67

**Characteristics:**

- Compliance: VDE-AR-N 4105:2018, EN50549-1:2019, VFR2019, IEC/EN 62109-1/-2, IEC/EN 61000-3-2/-3, IEC/EN-61000-6-1/-2/-3/-4

**Package contents:**

- 1x PV Micro Inverter, 1x AC input end cap, 1x Female Betteri adapter, User manual

*Note: This publication summarizes product warranty and Specifications which are subject to change without notice. Product photos are for reference only, on behalf of actual product*

**Manufactured for:**

Technaxx Deutschland GmbH & Co.KG  
Konrad-Zuse-Ring 16-18, 61137 Schöneck,  
Germany  
WEEE-Reg.-Nr. DE94626913  
www.technaxx.de

**Technical specifications**

Model	TX-203	TX-204
DC-input		
Recommended panel power (W)	240-380 (per panel)	
Panel compatibility	60-cell or 72-cell panels	
Max. number of panels	1	2
Panel connection	MC4	
MPPT voltage range (V)	29-48	
Starting voltage (V)	22	
Operating voltage range (V)	16-60	
Max. input voltage (V)	60	
Max. input current (A)	11.5	2x 11.5
Max. input short-circuit current (A)	15	2x15

**AC-Output**

Rated output power (VA)	300	600
Rated output current (A)	1.36 at 220V 1.30 at 230V 1.25 at 240V	2.73 at 220V 2.61 at 230V 2.50 at 240V
Rated output voltage/range (V)	220/180-275 230/180-275 240/180-275	
Rated frequency/rated frequency range (Hz)	45-55 (under 50Hz @ 220 V & 230 V) 55-65 (under 60Hz @ 220 V & 230 V)	
Power factor	>0.99 standard 0.8 leading.....0.8 delayed	
Output current harmonic distortion	≤3%	
Maximum number of devices in series	12	6

**Efficiency, safety and protection**

Peak efficiency	96.70%
CEC weighted efficiency	96.50%
MPPT rated efficiency	99.80%
Nightly power consumption (mW)	<50

**Mechanical data**

AMBIENT temperature range (°C)	-40~+65	
Storage temperature range (°C)	-40~+85	
Dimensions (WxHxD) mm	182x164x29.5	250x170x28
Weight (kg)	1.98	3.00
Protection class	NEMA outdoor (IP67)	
Cooling	Natural circulating air - no fans	
AC output cable length (cm)	98	188
AC input cable length (cm)	10	8.5

