

# Technaxx Video Watch Compass HD 4GB

## User Manual

Please find the Declaration of Conformity for this device under following internet-link:

[www.technaxx.de/konformitätserklärung/video\\_watch\\_compass\\_hd\\_4gb](http://www.technaxx.de/konformitätserklärung/video_watch_compass_hd_4gb)

### Charging and low battery status

1. This watch has a built-in rechargeable Li-battery which can be charged by connecting the watch's USB interface with adapter or computer USB interface. After connected it, the red light and the blue light both turn ON, and then the red light turns OFF while the blue light flashes slowly, indicating its charging. When the blue light constantly is ON, it indicates that the device is fully charged. Then disconnect it.

2. While recording video or taking pictures, the blue light flashes quickly when the battery becomes a low status. The camera turns OFF automatically. Before the camera turns OFF, it saves the files.

### Buttons



1. Power/Video-Photo-Audio button: press and hold the button to turn on/off, press shortly to record a video

2. USB interface

3. Mode button: press shortly to change function mode

4. Camera lens

5. LED indicator

6. Microphone

7. Time setting

8. Compass

RESET: Press down the Power/Video-Photo-Audio button (1) together with the Mode button (2) at the same time

# Operation Methods

## 1. Turning camera ON

Press and hold down the Power/Video-Photo-Audio button for two seconds. The red light and blue light both turn on at the same time. The red light turns off while the blue light keeps on shining (it indicates power on and standby time mode).

## 2. Turning camera OFF

In the standby/video mode press and hold down the Power/Video-Photo-Audio button. The red light flashes for three times and then turns off. When the camera is not used 3 minutes after powered on, it will power off automatically.

## 3. Recording a video

In the standby time mode, press shortly the Power/Video-Photo-Audio button. The blue light flashes for 3 times and then turns off. The video recording begins. Meanwhile press shortly any button, the blue light flashes for 3 times. It reminds you that it is recording a video. Press the Power/Video button 2 times shortly and the video will be saved and you enter in the standby mode.

**Note:** When the camera is out of memory, the red and blue lights both flash quickly, about 5 seconds later the camera turns off automatically.

## 4. Switching camera modes

In Standby mode: press mode button (3) shortly to change:

- Red LED turns ON = photo mode
- Red & blue LED's turn ON = audio mode
- Blue LED turns ON = video mode

## 5. Taking a photo

In the standby mode when the red light is ON, press shortly the Power/Video-Photo-Audio button. When the red light flashes once, a photo is saved in JPG format.

## 6. Separate sound recording

In the standby mode press shortly the Mode button. When the red light and blue light both turn on, press shortly the Power/Video-Photo-Audio button. Then red light flashes slowly, sound recording begins. Meanwhile, press shortly the Mode button to change into another mode and a sound clip is saved.

## 7. RESET

When the system crashes down, do a RESET to restart the system.

Press down the Power/Video-Photo-Audio button (1) together with the Mode button (2) at the same time.

## Installation of the driver

1. For Win98 only installation of an additional driver to the PC is needed (it is on the CD-ROM enclosed in delivery). It comes to effect after restarted the PC.

There is no need to install the driver for Windows Vista / XP / ME / 2000 / Mac OS 9.2.2 systems or higher version.

2. Put the CD accessory to the CD-ROM drive to install the PC camera driver (WDV\_020\_PC-Camera.exe) to the computer.

## Connection with a computer

1. Use the USB cable to connect it to the PC USB port. After that a “removable disk” occurs on the computer. When the watch camera is connected to the PC, the watch begins to work as a removable disk. Video/transmit/copy can be checked, data can be easily attached and deleted (video, audio, etc) and non-music documents can be saved.

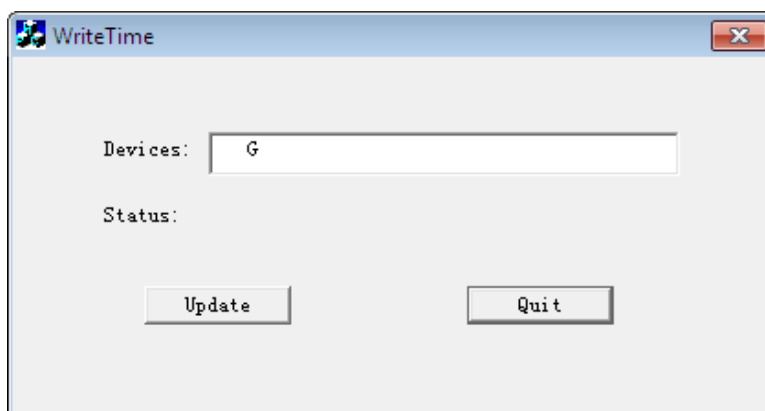
2. **PC camera function:** In power on mode, connect the watch to the PC with the USB cable. After that the red light turns on. You will find the “standard camera” PC camera device on My Computer (after installation of the driver). Then the PC camera can be used.

### 3. Update date and time of the video:

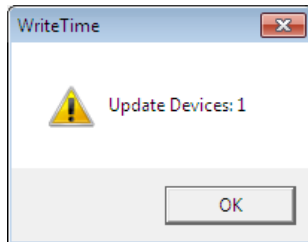
Connect the device to your computer and run the tool „WriteTime.exe“ from the included CD. You can also download the tool from:

<http://www.technaxx.de/support/drivers/WriteTime.zip>

Choose the correct drive letter:



Click "Update" and then "OK".



Close the tool and disconnect the device.

#### 4. Quit USB device:

- a. Double-click the Windows Interface "Safely Remove Hardware" icon (lower right corner of the green arrow).
- b. Select "Stop" in "Safely Remove Hardware" dialog box.
- c. Choose the device to stop, click "OK", device quit safely, "Safely Remove Hardware" dialog box shows 'USB Mass Storage Device can now be safely removed from the system' in the lower right corner of the green arrow.
- d. Close "Safely Remove Hardware" dialog box.
- e. Disconnect the USB device from the computer.

## FAQ's

### ***Cannot turn on:***

Check if the devices power is low: charge the battery

### ***Can not upload / download files normally***

1. Check the USB cable between the devices USB and the PC, maybe is damaged or not/correct connected
2. Check if the driver is installed properly (Windows 98 system)
3. Check if there is enough storage space to save the file

## Technical Specifications

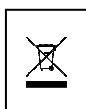
Video resolution	1280 * 720; 30fps (frames per second)
Photo resolution	1600 * 1200 (optional)
Video format	AVI
Photo format	JPG
USB	1.1 (Hs)
Flash memory	4GB
Battery	Li-battery, built-in

Supports	Video recording function; Compass function; Audio/Sound recording function (with an extra waterproofed cap for the microphone button); Standard PC camera function (need to install the provided driver)
Feature	Protected against water, dirt, dust, rain, snow
OS	Windows Vista / XP / ME / 2000 / Mac OS 9.2.2 or higher version, no need to install a driver (Windows98 need a driver installation)

#### Security and Disposal Hints for Batteries

- Hold children off batteries. When a child swallowed a battery by mistake go to a doctor's place or bring the child into a hospital promptly!
- Look for the right polarity (+) and (−) of batteries! Always change all batteries, never use old and new batteries or batteries of different types together.
- Do NOT open, deform or load up batteries! There is a **risk of injury** by battery leakage fluid!
- NEVER throw batteries into fire! There is a **risk of explosion**! Never short batteries.
- Take out exhausted batteries from the device and take out batteries from the device when its not used over a longer period of time.

#### Hints for Environment Protection



**Packages materials are raw materials and can be recycled.** Separate the packages by types and put them to an adequate recycling on behalf of the environment.

**Do not disposal old devices into the domestic waste.** Disposal old / defective devices professionally! The environment will be grateful for that.

**Do not disposal batteries into the domestic waste.** Disposal old / empty / defective batteries professionally! The environment will be more than grateful for that.

**Cleaning:** Protect the device from contamination and pollution. Only clean the device with soft cloth or drapery, avoid using rough or coarse-grained materials. Do NOT use solvents or other aggressive cleaner. Wipe the device after cleaning accurately. **Important Notice:** Should battery fluid leak from a battery, wipe the battery-case with a soft cloth dry and put in a new battery!